

**SUPPLEMENT DATED JUNE 23, 2025 TO THE CURRENT SUMMARY AND STATUTORY PROSPECTUSES
AND STATEMENT OF ADDITIONAL INFORMATION FOR:**

**Invesco Oppenheimer International Growth Fund
Invesco Oppenheimer V.I. International Growth Fund**

(each a “Fund” and collectively, the “Funds”)

This supplement amends the Summary and Statutory Prospectuses and Statements of Additional Information (“SAI”) of the above referenced Funds and is in addition to any other supplement(s), unless otherwise specified. *You should read this supplement in connection with the Summary and Statutory Prospectuses and SAI and retain it for future reference.*

Fund Name Changes: The Boards of Trustees of AIM International Mutual Funds (Invesco International Mutual Funds) and AIM Variable Insurance Funds (Invesco Variable Insurance Funds) approved the name change of Invesco Oppenheimer International Growth Fund and Invesco Oppenheimer V.I. International Growth Fund, respectively, effective on or about August 22, 2025, as shown below.

Current Fund Name	New Fund Name
Invesco Oppenheimer International Growth Fund	Invesco International Growth Fund
Invesco Oppenheimer V.I. International Growth Fund	Invesco V.I. International Growth Fund

Accordingly, effective on or about August 22, 2025, any and all references to the Funds in their Summary and Statutory Prospectuses and SAI are replaced with their new Fund names.

In addition, effective on or about August 22, 2025:

The MSCI ACWI ex-USA Growth Index is being added as each Fund’s style-specific benchmark. Accordingly, the following information is added to the Average Annual Total Returns table appearing under the heading “**Performance Information**” in each Fund’s Summary and Statutory Prospectuses:

	1 Year	5 Years	10 Years
MSCI ACWI ex-USA® Growth Index (Net) (reflects reinvested dividends net of withholding taxes, but reflects no deduction for fees, expenses or other taxes)	5.07%	3.44%	5.35%



Invesco Oppenheimer V.I. International Growth Fund

Series I shares and Series II shares

Before you invest, you may want to review the Fund's prospectus, which contains more information about the Fund and its risks. You can find the Fund's prospectus, reports to shareholders, and other information about the Fund online at www.invesco.com/prospectus. You can also get this information at no cost by calling (800) 959-4246 or by sending an e-mail request to ProspectusRequest@invesco.com. The Fund's prospectus and statement of additional information, both dated April 30, 2025 (as each may be amended or supplemented), are incorporated by reference into this Summary Prospectus and may be obtained, free of charge, at the website, phone number or e-mail address noted above.

Investment Objective(s)

The Fund's investment objective is to seek capital appreciation.

Fees and Expenses of the Fund

This table describes the fees and expenses that are incurred, directly or indirectly, when a variable product owner buys, holds, or redeems interest in an insurance company separate account that invests in the Series I shares or Series II shares of the Fund but does not represent the effect of any fees or other expenses assessed in connection with your variable product, and if it did, expenses would be higher.

Shareholder Fees (fees paid directly from your investment)

	Series I shares	Series II shares
Maximum Sales Charge (Load) Imposed on Purchases (as a percentage of offering price)	None	None
Maximum Deferred Sales Charge (Load) (as a percentage of original purchase price or redemption proceeds, whichever is less)	None	None

Annual Fund Operating Expenses (expenses that you pay each year as a percentage of the value of your investment)

	Series I shares	Series II shares
Management Fees	0.96%	0.96%
Distribution and/or Service (12b-1) Fees	None	0.25
Other Expenses ¹	0.21	0.21
Total Annual Fund Operating Expenses	1.17	1.42
Fee Waiver and/or Expense Reimbursement ²	0.17	0.17
Total Annual Fund Operating Expenses After Fee Waiver and/or Expense Reimbursement	1.00	1.25

¹ "Other Expenses" have been restated to reflect current fees.

² Invesco Advisers, Inc. (Invesco or the Adviser) has contractually agreed to waive advisory fees and/or reimburse expenses to the extent necessary to limit Total Annual Fund Operating Expenses After Fee Waiver and/or Expense Reimbursement (excluding certain items discussed below) of Series I and Series II shares to 1.00% and 1.25%, respectively, of the Fund's average daily net assets (the "expense limits"). In determining the Adviser's obligation to waive advisory fees and/or reimburse expenses, the following expenses are not taken into account, and could cause the Total Annual Fund Operating Expenses After Fee Waiver and/or Expense Reimbursement to exceed the numbers reflected above: (i) interest; (ii) taxes; (iii) dividend expense on short sales; (iv) extraordinary or non-routine items, including litigation expenses; and (v) expenses that the Fund has incurred but did not actually pay because of an expense offset arrangement. Unless Invesco continues the fee waiver agreement, it will terminate on April 30, 2026. During its term, the fee waiver agreement cannot be terminated or amended to increase the expense limits without approval of the Board of Trustees.

Example. This Example is intended to help you compare the cost of investing in the Fund with the cost of investing in other mutual funds.

This Example does not represent the effect of any fees or expenses assessed in connection with your variable product, and if it did, expenses would be higher.

The Example assumes that you invest \$10,000 in the Fund for the time periods indicated and then redeem all of your shares at the end of those periods. The Example also assumes that your investment has a 5% return each year and that the Fund's operating expenses remain equal to the Total Annual Fund Operating Expenses After Fee Waiver and/or Expense Reimbursement in the first year and the Total Annual Fund Operating Expenses thereafter.

Although your actual costs may be higher or lower, based on these assumptions, your costs would be:

	1 Year	3 Years	5 Years	10 Years
Series I shares	\$102	\$355	\$627	\$1,405
Series II shares	\$127	\$433	\$760	\$1,687

Portfolio Turnover. The Fund pays transaction costs, such as commissions, when it buys and sells securities (or "turns over" its portfolio). A higher portfolio turnover rate may indicate higher transaction costs. These costs, which are not reflected in annual fund operating expenses or in the Example, affect the Fund's performance. During the most recent fiscal year, the Fund's portfolio turnover rate was 18% of the average value of its portfolio.

Principal Investment Strategies of the Fund

Under normal circumstances, the Fund will invest at least 65% of its total assets in equity securities of issuers that are domiciled or that have their

primary operations in at least three different countries outside of the United States. The Fund may invest 100% of its total assets in securities of foreign companies. The Fund mainly invests in the common stock of "growth companies," which are companies considered by the Fund's portfolio managers to have potential for earnings or revenue growth.

The Fund may invest up to 25% of its total assets in emerging markets (i.e., those that are generally in the early stages of their industrial cycles). The Fund considers an issuer to be located in an emerging market if it is organized under the laws of an emerging country; its principal securities trading market is in an emerging market; at least 50% of the issuer's non-current assets, capitalization, gross revenue or profit is derived from assets or activities located in emerging markets (directly or indirectly); or its "country of risk" is located in an emerging market as determined by a third party service provider. From time to time, the Fund may place greater emphasis on investing in one or more particular countries, or regions, such as Asia or Europe.

The Fund does not limit its investments to issuers within a specific market capitalization range and at times may invest a substantial portion of its assets in one or more particular capitalization ranges. The Fund can also buy preferred stocks, securities convertible into common stocks and other securities having equity features.

The Fund's portfolio managers look primarily for high growth potential using a "bottom up" investment approach on a company-by-company basis. That approach looks at the investment performance of individual stocks before considering the impact of general or industry specific economic trends. It includes fundamental analysis of a company's financial statements and management structure and consideration of the company's operations, product development, and industry position.

The portfolio managers currently focus on the following factors, which may vary in particular cases and may change over time:

- companies that the portfolio managers believe have a strong competitive position and high demand for their products or services;
- companies with accelerating earnings growth and cash flow; and
- diversity among companies, industries and countries to help reduce the risks of foreign investing, such as currency fluctuations and stock market volatility.

The portfolio managers also consider the effects of worldwide trends on the growth of particular business sectors and look for companies that may benefit from those trends. The trends currently considered include: mass affluence, new technologies, restructuring and aging. The portfolio managers do not invest any fixed amount of the Fund's assets according to these criteria and the trends that are considered may change over time. The portfolio managers monitor individual issuers for changes in the factors above, which may trigger a decision to sell a security, but does not require a decision to do so.

Principal Risks of Investing in the Fund

As with any mutual fund investment, loss of money is a risk of investing. An investment in the Fund is not a deposit in a bank and is not insured or guaranteed by the Federal Deposit Insurance Corporation or any other governmental agency. The risks associated with an investment in the Fund can increase during times of significant market volatility. The principal risks of investing in the Fund are:

Market Risk. The market values of the Fund's investments, and therefore the value of the Fund's shares, will go up and down, sometimes rapidly or unpredictably. Market risk may affect a single issuer, industry or section of the economy, or it may affect the market as a whole. The value of the Fund's investments may go up or down due to general market conditions that are not specifically related to the particular issuer. These market conditions may include real or perceived adverse economic conditions, changes in trade regulation or economic sanctions, changes in the general outlook for revenues or corporate earnings, changes in interest or currency rates, regional or global instability and uncertainty, natural or environmental disasters, widespread disease or other public health issues,

war, military conflict, acts of terrorism, economic crisis or adverse investor sentiment generally, among others. Certain changes in the U.S. economy in particular, such as when the U.S. economy weakens or when its financial markets decline, may have a material adverse effect on global financial markets as a whole, and on the securities to which the Fund has exposure. Increasingly strained relations between the U.S. and foreign countries, including as a result of economic sanctions and tariffs, may also adversely affect U.S. issuers, as well as non-U.S. issuers.

During a general downturn in the financial markets, multiple asset classes may decline in value. When markets perform well, there can be no assurance that specific investments held by the Fund will rise in value.

Investing in Stocks Risk. The value of the Fund's portfolio may be affected by changes in the stock markets. Stock markets may experience significant short-term volatility and may fall or rise sharply at times. Adverse events in any part of the equity or fixed-income markets may have unexpected negative effects on other market segments. Different stock markets may behave differently from each other and U.S. stock markets may move in the opposite direction from one or more foreign stock markets.

The prices of individual stocks generally do not all move in the same direction at the same time. However, individual stock prices tend to go up and down more dramatically than those of certain other types of investments, such as bonds. A variety of factors can negatively affect the price of a particular company's stock. These factors may include, but are not limited to: poor earnings reports, a loss of customers, litigation against the company, general unfavorable performance of the company's sector or industry, or changes in government regulations affecting the company or its industry. To the extent that securities of a particular type are emphasized (for example foreign stocks, stocks of small- or mid-cap companies, growth or value stocks, or stocks of companies in a particular industry), Fund share values may fluctuate more in response to events affecting the market for those types of securities.

Preferred Securities Risk. Preferred securities are subject to issuer-specific and market risks applicable generally to equity securities. Preferred securities also may be subordinated to bonds or other debt instruments, subjecting them to a greater risk of non-payment, may be less liquid than many other securities, such as common stocks, and generally offer no voting rights with respect to the issuer.

Foreign Securities Risk. The Fund's foreign investments may be adversely affected by political and social instability, changes in economic or taxation policies, difficulty in enforcing obligations, decreased liquidity or increased volatility. Foreign investments also involve the risk of the possible seizure, nationalization or expropriation of the issuer or foreign deposits (in which the Fund could lose its entire investments in a certain market) and the possible adoption of foreign governmental restrictions such as exchange controls. Foreign companies generally may be subject to less stringent regulations than U.S. companies, including financial reporting requirements and auditing and accounting controls, and may therefore be more susceptible to fraud or corruption. There may be less public information available about foreign companies than U.S. companies, making it difficult to evaluate those foreign companies. Unless the Fund has hedged its foreign currency exposure, foreign securities risk also involves the risk of negative foreign currency rate fluctuations, which may cause the value of securities denominated in such foreign currency (or other instruments through which the Fund has exposure to foreign currencies) to decline in value. Currency exchange rates may fluctuate significantly over short periods of time. Currency hedging strategies, if used, are not always successful.

Geographic Focus Risk. The Fund may from time to time have a substantial amount of its assets invested in securities of issuers located in a single country or a limited number of countries. Adverse economic, political or social conditions in those countries may therefore have a significant negative impact on the Fund's investment performance.

European Investment Risk. The Economic and Monetary Union (the EMU) of the European Union (the EU) requires compliance by member

countries with restrictions on inflation rates, deficits, interest rates, debt levels and fiscal and monetary controls, each of which may significantly affect every country in Europe. Decreasing imports or exports, changes in governmental or EU regulations on trade, changes in the exchange rate of the euro, the default or threat of default by an EU member country on its sovereign debt, and/or an economic recession in an EU member country may have significant adverse effects on the economies of EU member countries and the EU and Europe as a whole. Responses to these and other financial problems by European governments, central banks, and others, including austerity measures and reforms, may not produce the desired results, may limit future growth and economic recovery, or may result in social unrest, or have other unintended consequences. Further defaults or restructurings by governments and other entities of their debt could have additional adverse effects on economies, financial markets, and asset valuations around the world. A number of countries in Eastern Europe remain relatively undeveloped and can be particularly sensitive to political and economic developments. Separately, the EU faces issues involving its membership, structure, procedures and policies. The exit of one or more member countries from the EU, such as the departure of the United Kingdom (the UK), referred to as Brexit, could place the departing member's currency and banking system under severe stress or even in jeopardy. An exit by other member countries will likely result in increased volatility, illiquidity and potentially lower economic growth in the affected markets, which will adversely affect the Fund's investments.

Emerging Market Securities Risk. Emerging markets (also referred to as developing markets) are generally subject to greater market volatility, political, social and economic instability, uncertain trading markets and more governmental limitations on foreign investment than more developed markets. In addition, companies operating in emerging markets may be subject to lower trading volume and greater price fluctuations than companies in more developed markets. Such countries' economies may be more dependent on relatively few industries or investors that may be highly vulnerable to local and global changes. Companies in emerging market countries generally may be subject to less stringent regulatory, disclosure, financial reporting, accounting, auditing and recordkeeping standards than companies in more developed countries. As a result, information, including financial information, about such companies may be less available and reliable, which can impede the Fund's ability to evaluate such companies. Securities law and the enforcement of systems of taxation in many emerging market countries may change quickly and unpredictably, and the ability to bring and enforce actions (including bankruptcy, confiscatory taxation, expropriation, nationalization of a company's assets, restrictions on foreign ownership of local companies, restrictions on withdrawing assets from the country, protectionist measures and practices such as share blocking), or to obtain information needed to pursue or enforce such actions, may be limited. In addition, the ability of foreign entities to participate in privatization programs of certain developing or emerging market countries may be limited by local law. Investments in emerging market securities may be subject to additional transaction costs, delays in settlement procedures, unexpected market closures, and lack of timely information.

Growth Investing Risk. If a growth company's earnings or stock price fails to increase as anticipated, or if its business plans do not produce the expected results, the value of its securities may decline sharply. Growth companies may be newer or smaller companies that may experience greater stock price fluctuations and risks of loss than larger, more established companies. Newer growth companies tend to retain a large part of their earnings for research, development or investments in capital assets. Therefore, they may not pay any dividends for some time. Growth investing has gone in and out of favor during past market cycles and is likely to continue to do so. During periods when growth investing is out of favor or when markets are unstable, it may be more difficult to sell growth company securities at an acceptable price and the securities of growth companies may underperform the securities of value companies or the overall stock

market. Growth stocks may also be more volatile than other securities because of investor speculation.

Small- and Mid-Capitalization Companies Risk. Investing in securities of small- and mid-capitalization companies involves greater risk than customarily is associated with investing in larger, more established companies. Stocks of small- and mid-capitalization companies tend to be more vulnerable to changing market conditions, may have little or no operating history or track record of success, and may have more limited product lines and markets, less experienced management and fewer financial resources than larger companies. These companies' securities may be more volatile and less liquid than those of more established companies. They may be more sensitive to changes in a company's earnings expectations and may experience more abrupt and erratic price movements. Smaller companies' securities often trade in lower volumes and in many instances, are traded over-the-counter or on a regional securities exchange, where the frequency and volume of trading is substantially less than is typical for securities of larger companies traded on national securities exchanges. Therefore, the securities of smaller companies may be subject to wider price fluctuations and it might be harder for the Fund to dispose of its holdings at an acceptable price when it wants to sell them. Since small- and mid-cap companies typically reinvest a high proportion of their earnings in their business, they may not pay dividends for some time, particularly if they are newer companies. It may take a substantial period of time to realize a gain on an investment in a small- or mid-cap company, if any gain is realized at all.

Sector Focus Risk. The Fund may from time to time have a significant amount of its assets invested in one market sector or group of related industries. In this event, the Fund's performance will depend to a greater extent on the overall condition of the sector or group of industries and there is increased risk that the Fund will lose significant value if conditions adversely affect that sector or group of industries.

Convertible Securities Risk. The market values of convertible securities are affected by market interest rates, the risk of actual issuer default on interest or principal payments and the value of the underlying common stock into which the convertible security may be converted. Additionally, a convertible security is subject to the same types of market and issuer risks that apply to the underlying common stock. In addition, certain convertible securities are subject to involuntary conversions and may undergo principal write-downs upon the occurrence of certain triggering events, and, as a result, are subject to an increased risk of loss. Convertible securities may be rated below investment grade and therefore considered to have more speculative characteristics and greater susceptibility to default or decline in market value than investment grade securities.

Management Risk. The Fund is actively managed and depends heavily on the Adviser's judgment about markets, interest rates or the attractiveness, relative values, liquidity, or potential appreciation of particular investments made for the Fund's portfolio. The Fund could experience losses if these judgments prove to be incorrect. There can be no guarantee that the Adviser's investment techniques or investment decisions will produce the desired results. Additionally, legislative, regulatory, or tax developments may adversely affect management of the Fund and, therefore, the ability of the Fund to achieve its investment objective.

Performance Information

The bar chart and performance table provide an indication of the risks of investing in the Fund. The Fund has adopted the performance of the Oppenheimer International Growth Fund/VA (the predecessor fund) as the result of a reorganization of the predecessor fund into the Fund, which was consummated after the close of business on May 24, 2019 (the "Reorganization"). Prior to the Reorganization, the Fund had not yet commenced operations. The bar chart shows changes in the performance of the Series I shares of the Fund and the Non-Service Shares of the predecessor fund from year to year as of December 31. The performance table compares the predecessor fund's and the Fund's performance to that

of a broad measure of market performance. The bar chart and performance table below do not reflect charges assessed in connection with your variable product; if they did, the performance shown would be lower. The Fund's (and the predecessor fund's) past performance is not necessarily an indication of how the Fund will perform in the future.

The returns shown for periods ending on or prior to May 24, 2019 are those of the Non-Service Shares and Service Shares of the predecessor fund, and are not offered by the Fund. The Non-Service Shares of the predecessor fund were reorganized into Series I shares of the Fund and the Service Shares of the predecessor fund were reorganized into the Series II shares of the Fund after the close of business on May 24, 2019. Series I shares' and Series II shares' returns of the Fund will be different from the Non-Service Shares' and the Service Shares' returns of the predecessor fund as they have different expenses.

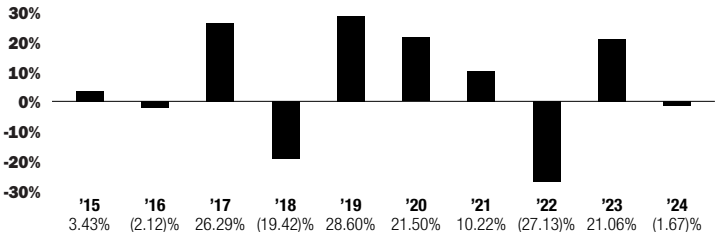
Fund performance reflects any applicable fee waivers and expense reimbursements. Performance returns would be lower without applicable fee waivers and expense reimbursements.

All Fund performance shown assumes the reinvestment of dividends and capital gains and the effect of the Fund's expenses.

The Series I shares and Series II shares invest in the same portfolio of securities and will have substantially similar performance, except to the extent that the expenses borne by each share class differ. Series II shares have higher expenses (and therefore lower performance) resulting from its Rule 12b-1 plan, which provides for a maximum fee equal to an annual rate of 0.25% (expressed as a percentage of average daily net assets of the Fund).

Updated performance information is available on the Fund's website at www.invesco.com/us.

Annual Total Returns



Series I	Period Ended	Returns
Best Quarter	June 30, 2020	19.90%
Worst Quarter	March 31, 2020	-20.00%

Average Annual Total Returns (for the periods ended December 31, 2024)

	Inception Date	1 Year	5 Years	10 Years
Series I	5/13/1992	-1.67%	3.04%	4.41%
Series II	3/19/2001	-1.81	2.83	4.15
MSCI ACWI ex USA® Index (Net) (reflects reinvested dividends net of withholding taxes, but reflects no deduction for fees, expenses or other taxes)		5.53	4.10	4.80

Management of the Fund

Investment Adviser: Invesco Advisers, Inc. (Invesco or the Adviser)

Portfolio Managers	Title	Length of Service on the Fund
Robert B. Dunphy, CFA	Portfolio Manager (Lead)	2019 (predecessor fund 2012)
Ananya Lodaya	Portfolio Manager	2024

Purchase and Sale of Fund Shares

You cannot purchase or sell (redeem) shares of the Fund directly. Please contact the insurance company that issued your variable product for more information on the purchase and sale of Fund shares. For more information, see "Other Information—Purchase and Redemption of Shares" in the prospectus.

Tax Information

The Fund expects, based on its investment objective and strategies, that its distributions, if any, will consist of ordinary income, capital gains, or some combination of both. Because shares of the Fund must be purchased through variable products, such distributions will be exempt from current taxation if left to accumulate within the variable product. Consult your variable insurance contract prospectus for additional tax information.

Payments to Insurance Companies

If you purchase the Fund through an insurance company or other financial intermediary, the Fund, the Fund's distributor or its related companies may pay the intermediary for the sale of Fund shares and related services. These payments may create a conflict of interest by influencing the insurance company or other intermediary and your salesperson or financial adviser to recommend the Fund over another investment. Ask your salesperson or financial adviser or visit your financial intermediary's website for more information.